

Notice for reinstalling Lift Loader in Windows Vista

The following is the procedure to reinstall Lift Loader in Windows Vista.

1. Uninstall Lift Loader.
2. Open explorer.

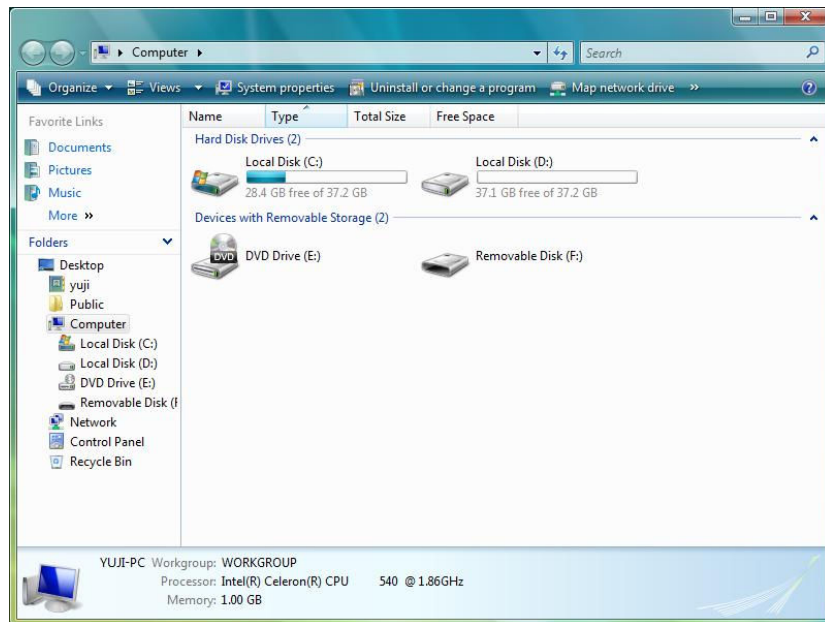


Figure 1 : Explorer

3. Search with inputting 'Lift Loader' in search box.

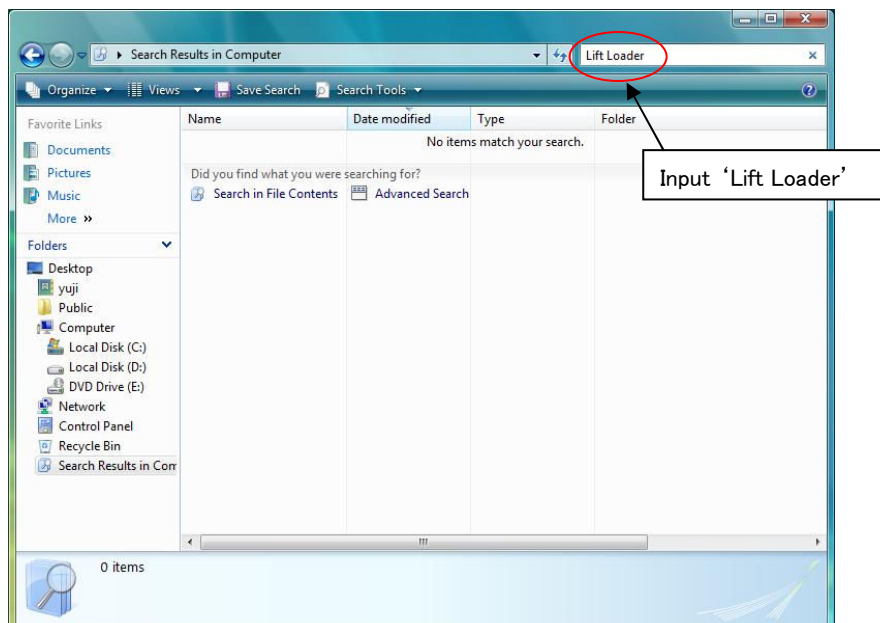


Figure 2 : Search result

4. Click 'Advanced Search' and check 'Include non-indexed, hidden and system files'

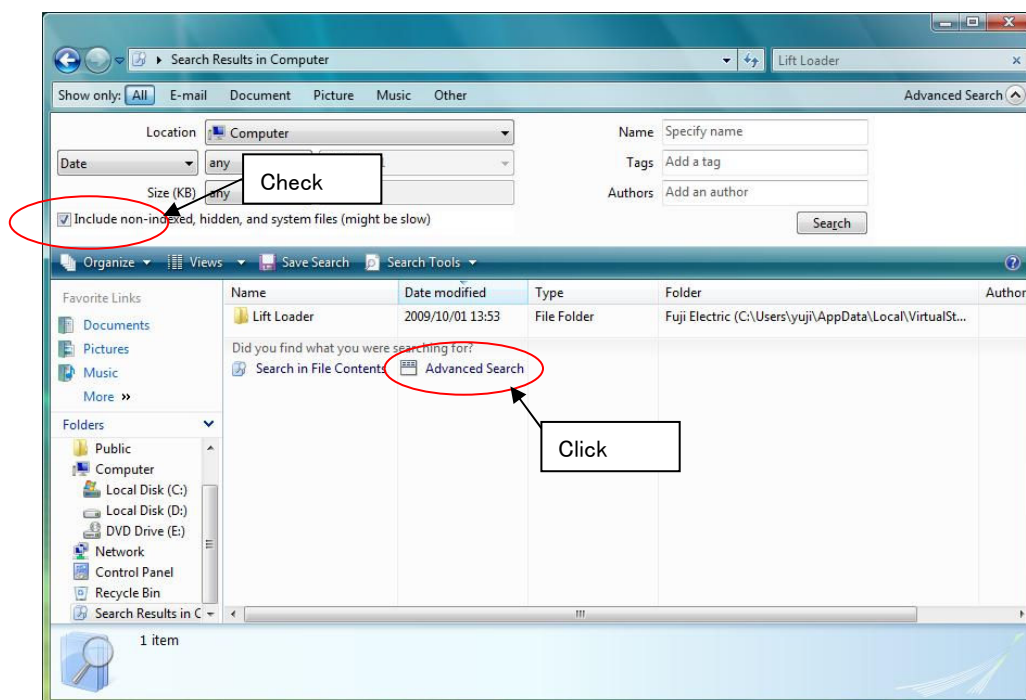


Figure 3 : Advanced search

5. Delete the folder that have the following indication in folder column of search result.
「Fuji Electric(C:\Users¥[user account]¥AppData¥Loacal¥VirtualStore¥Program Files)」
6. Install Lift Loader

<Note>

In case that Lift Loader is used by several user accounts, login by each user account and delete the folder indicated in procedure 5 after installation. If Lift Loader is started without deleting the folders, because new Lift Loader starts with old setting environment in relevant user account, there is a possibility that it does not work correctly like a part of function does not operate.

In case that you started Lift Loader without doing the procedure 5, if you do the procedure 5 after stopping Lift Loader, it will become to start correctly.